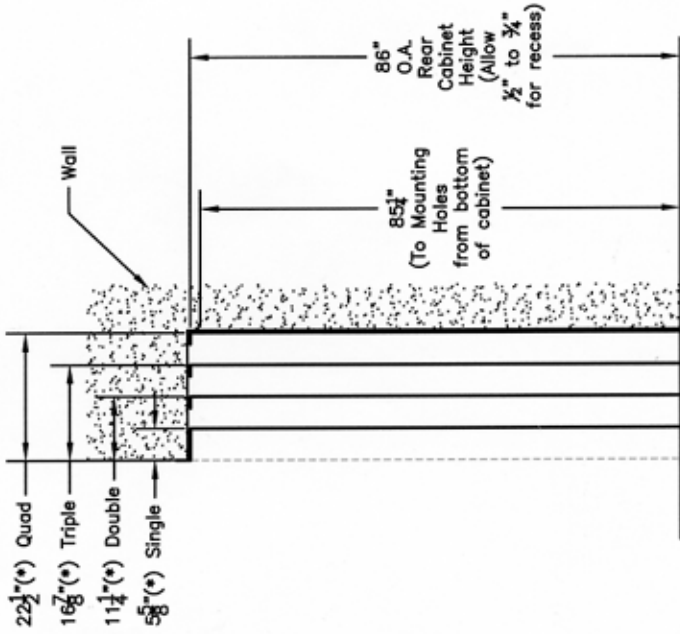
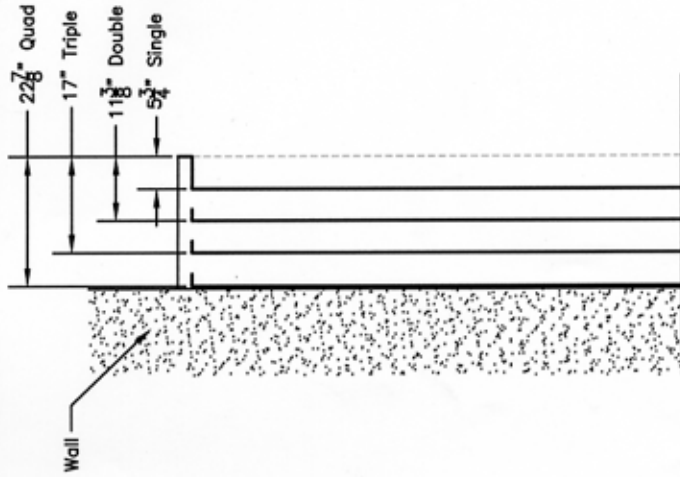




# HOWELL-WAKEFIELD CORPORATION

(\*) Allow  $\frac{3}{8}$ " to  $\frac{1}{2}$ " behind cab'l. for recess

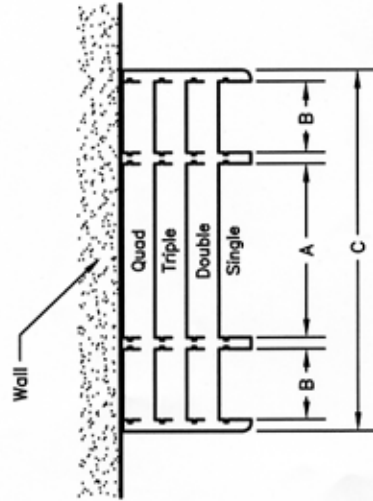


SECTION  
("A" Wall)

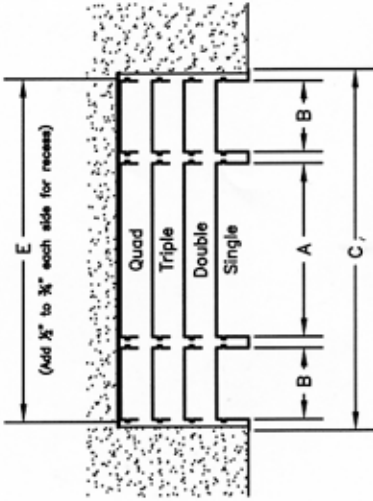
SECTION  
("S" Wall)

Mitchell "66" Series 14' DOUBLER Units*					
Models	A (TABLE)	B (BENCH)	C (OVERALL)	E (Applies to "S" Wall Only)	Center to center of cabinets to produce a 22" aisle
66S	28"	10"	57 3/4"	55 3/8"	75"
266S	28"	12"	61 3/4"	59 3/8"	79"
366S	30"	12"	63 3/4"	61 3/8"	81"
466S					

(\* ) 14' Nominal Dimension



PLAN VIEW  
"A" Wall



PLAN VIEW  
("S" Wall)