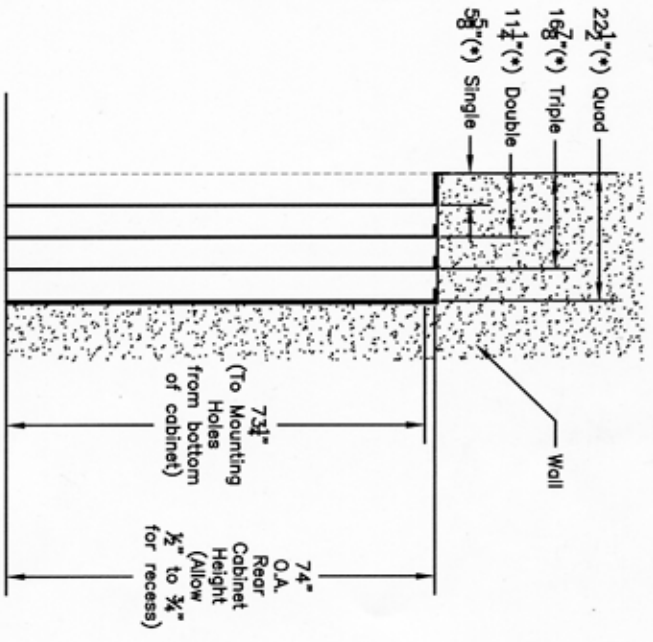
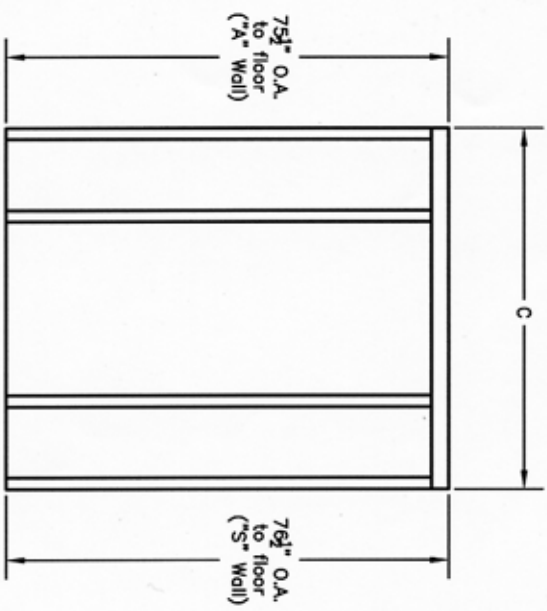
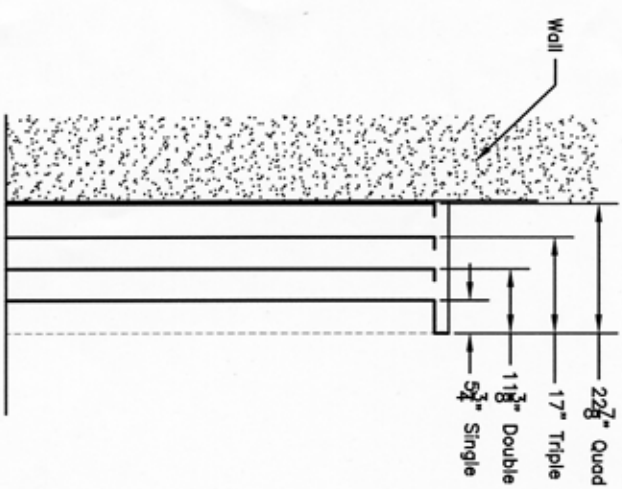
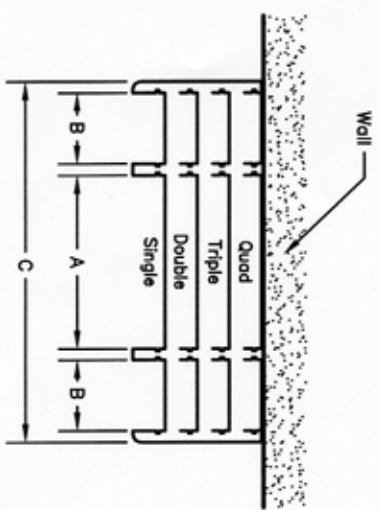


(\*) Allow  $\frac{3}{8}$ " to  $\frac{1}{2}$ " behind cab't., for recess



SECTION  
('A' Wall)

SECTION  
('S' Wall)

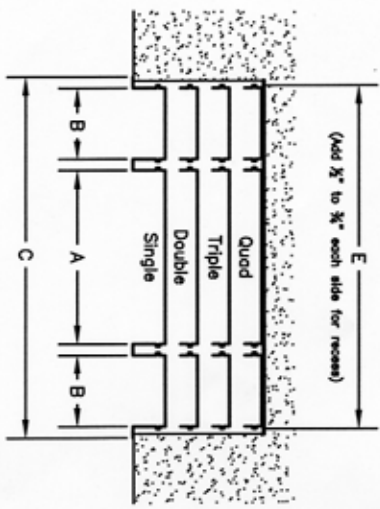


PLAN VIEW  
('A' Wall)

**Mitchell "56" Series  
12" DOUBLER Units\*  
Dimensions - with Benches**

Models	A	B	C	E
56S 56A	(TABLE)	(BENCH)	(OVERALL)	(Applies to center of cabinets to produce a 22" aisle Only)
296S 296A	28"	10"	57 $\frac{3}{4}$ "	55 $\frac{5}{8}$ "
356S 356A	28"	12"	61 $\frac{3}{4}$ "	59 $\frac{5}{8}$ "
456S 456A	30"	12"	63 $\frac{3}{4}$ "	61 $\frac{3}{8}$ "
				75"
				79"
				81"

(\* 12" Nominal Dimension)



PLAN VIEW  
('S' Wall)