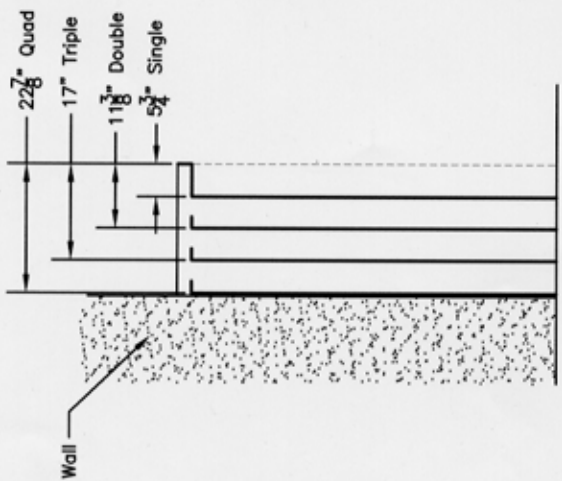
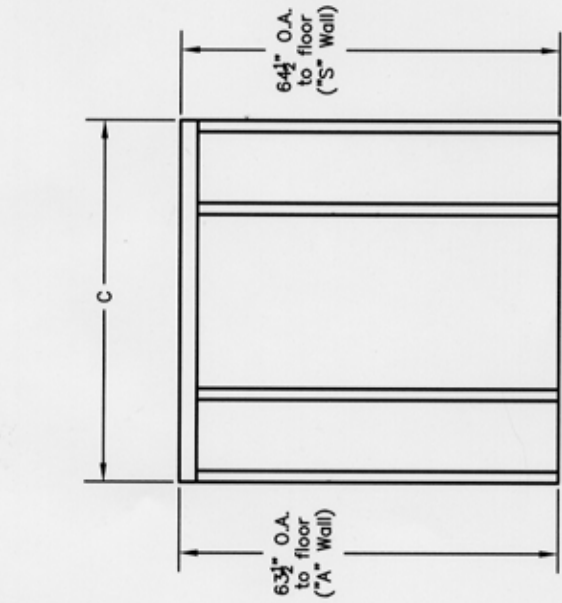
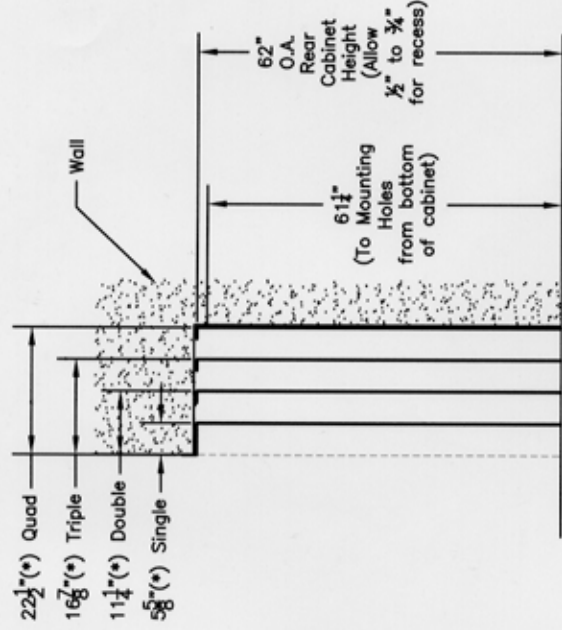


(\*) Allow  $\frac{3}{8}$ " to  $\frac{1}{2}$ " behind cab't. for recess



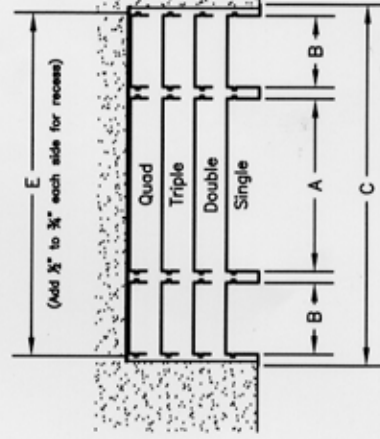
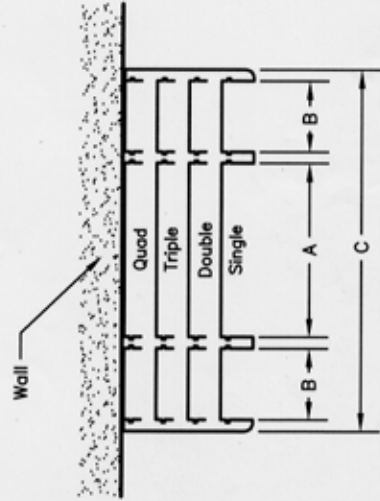
SECTION "A" Wall

SECTION "S" Wall

### Mitchell "46" Series 10' DOUBLER Units\* Dimensions - with Benches

Models	A (TABLE)	B (BENCH)	C (OVERALL)	E (Applies to "S" Wall Only)	Center to center of cabinets to produce a 22" aisle
46S 46A	28"	10"	57 3/4"	55 5/8"	75"
246S 246A	28"	12"	61 1/4"	59 5/8"	79"
346S 346A	30"	12"	63 3/4"	61 3/8"	81"
446S 446A					

(\*) 10' Nominal Dimension



PLAN VIEW "A" Wall

PLAN VIEW "S" Wall